



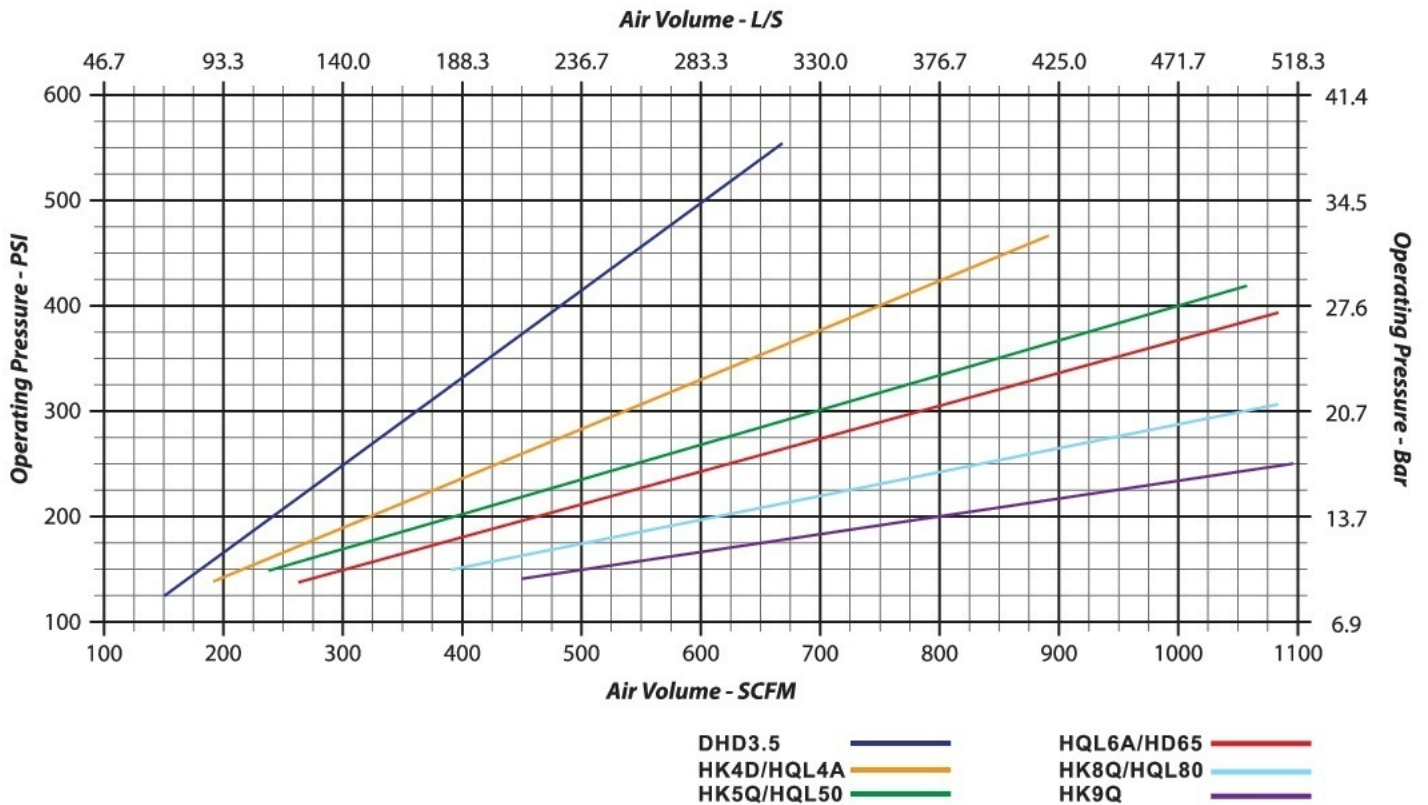
DTH Hammers & Bits

- DTH Hammer ----- PAGE 02
- DTH Bits ----- PAGE 18
- Drill Pipes ----- PAGE 26
- Adapters ----- PAGE 26
- Breakout Bench ----- PAGE 27

SPECIFICATIONS

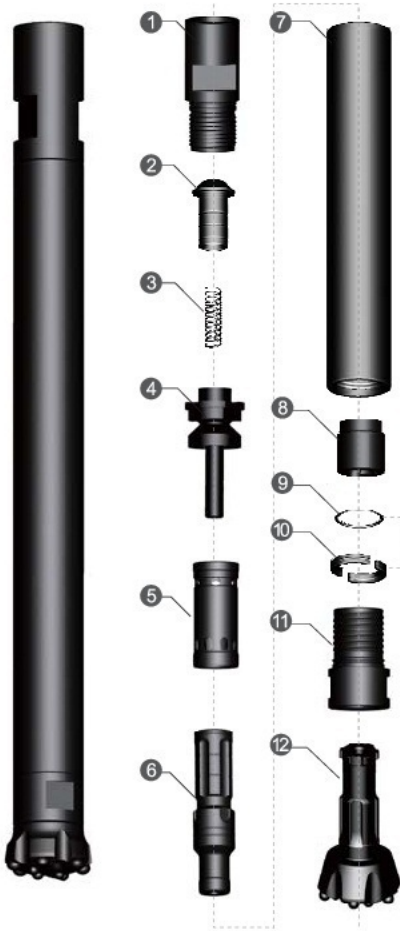
Hammer	BR2A	DHD3.5	SD4	DHD340A	QL4	QL50	QL50	DHD55	QL60	QL60	QL80	DHD380	QL100
Recommended bit size, mm	76	92-105	112-127			140-152			165-178		203-229		216-229
Bit shank	BR2A	DHD3.5	DHD340A		QL40	QL50		DHD350	QL60		QL80	DHD380	QL80
External diameter, mm	63	82	100	100	101	126.5	127.5	126.5	148	146	185	185	203
Length excl. thread, mm (Less bit)	837	855	915	1032.5	1057	1147	935	1167	1121	1182	1340	1487	1345
Hammer weight, kg (Less bit)	14.1	25	37.5	40.6	41	71.6	67.6	77.2	105	105	180	206	228
Package case size	(L)910 (W)90 (H)120	(L)1020 (W)110 (H)140	(L)1010 (W)130 (H)160	(L)1080 (W)125 (H)145	(L)1150 (W)130 (H)160	(L)1230 (W)155 (H)180	(L)1100 (W)155 (H)180	(L)1290 (W)150 (H)175	(L)1270 (W)170 (H)200	(L)1260 (W)180 (H)200	(L)1440 (W)230 (H)270	(L)1560 (W)230 (H)270	(L)1500 (W)240 (H)280
Top sub thread	RD50	2-3/8" API REG						3-1/2" API REG			4-1/2" API REG		
Working pressure, PSI	80-170	150-250	200-300			250-350			300-350		300-380		
Air consumption CFM	250-350	300-400	500-700			500-800			600-900		950-1200		
Piston diameter, mm	42.7	65	82	80	80	104	102	100	122	121	150	150	165
Piston weight, kg	1.7	5.1	9.2	9	9	17	17	16	24	24	38	42	50
Wrench flat, mm	L47 W50	L57 W35	L74.5 W45	L64 W40	NO wrench flat	L89 W60	L88 W50	L89 W60	L101 W65	L101 W60	L128 W70	L140 W70	L128 W70
Feed force, kN	2~6	3~8	5~15			6~25			7~20		10~25		
Rotation speed, r/m	30-70	30-90	25-80			20-70			25-60		20-60		
Drilling conditions and project specifications may require larger air package to be used													

AIR CONSUMPTION/OPERATING PRESSURE



Tech2 BR2A DTH HAMMER

Tech2 BR2A. Hammers	Item Description	Weight (Kg)	Part Number
---------------------	------------------	-------------	-------------



1	Top Sub	2.95	Tech2BR2A-TSUB
2	Check Valve	0.10	Tech2BR2A-CVALVE
3	Spring	0.05	Tech2BR2A-SPRING
4	Air Distributor	0.40	Tech2 BR2A-DIST
5	Internal Cylinder	0.85	Tech2BR2A-ICYL
6	Piston	2.70	Tech2BR2A-PISTON
7	External Cylinder	5.35	Tech2 BR2A-ECYL
8	Guided Sleeve	0.55	Tech2BR2A-BUSH
9	"O" Ring Stop Ring	0.005	Tech2BR2A-SR-SRING
10	Stop Ring	0.10	Tech2BR2A-SRING
11	Drive Chuck	1.05	Tech2 BR2A-DCHUCK
12	Drill Bit		Tech2BR2A-76FF-TV

Technical Data

Length(Less bit)	Weighth(Less bit)	External Diameter	Bit Shank	Hole Range	Connection Thread
880mm	14.1kg	Φ62mm	BR2	Φ76-Φ90	RD 50 BOX
Box Size	Impact rate at 1.7Mpa	Recommended rotation speed	Air Consumption		
			80-170(PSI)		
910x90x120mm	25HZ	25-40r/min	250-350(CFM)		

Tech3 DHD3.5 DTH HAMMER

Tech3 DHD3.5.Hammers	Item Description	Weight (Kg)	Part Number
----------------------	------------------	-------------	-------------

1	Top Sub	4.20	Tech3 DHD3.5-TSUB
2	"O" Ring of Top Sub	0.01	Tech3 DHD3.5-SR-TUSB
3	Check Valve	0.20	Tech3 DHD3.5-CVALVE
4	Spring	0.02	Tech3 DHD3.5-SPRING
5	Compression Buffer	0.02	Tech3 DHD3.5-CBUFFER
6	Air Distributor	1.40	Tech3 DHD3.5-DIST
7	Internal Cylinder	1.50	Tech3 DHD3.5-ICYL
8	Piston	5.60	Tech3 DHD3.5-PISTON
9	External Cylinder	9.90	Tech3 DHD3.5-ECYL
10	"O"Ring of Stop Ring	0.01	Tech3 DHD3.5-SR-RING
11	Stop Ring	0.15	Tech3 DHD3.5-SRING
12	Drive Chuck	1.90	Tech3 DHD3.5-DCHUCK
13	Drill Bit		Tech3 DHD3.5-90FF-TV

Technical Data

Length(Less bit)	Weighth(Less bit)	External Diameter	Bit Shank	Hole Range	Connection Thread
930mm	24.4Kg	Φ82	DHD3.5	Φ92-Φ105	API 2 3/8 " REG
Box Size	Impact rate at 1.7Mpa	Recommended rotation speed		Air Consumption	
1020x110x140mm	28HZ	25-40r/min		150-250(PSI)	
				300-400(CFM)	

TechH4 SD4 DTH HAMMER

TechH4 SD4. Hammers	Item Description	Weight (Kg)	Part Number
	1 Top Sub	6.50	TechH4 SD4-TSUB
	2 "O"Ring of Top Sub	0.01	TechH4 SD4-SR-TSUB
	3 Check Valve	0.35	TechH4 SD4-CVALVE
	4 Spring	0.05	TechH4 SD4-SPRING
	5 Compression Buffer	0.15	TechH4 SD4-CBUFFER
	6 Air Distributor	2.10	TechH4 SD4-DIST
	7 Internal Cylinder	2.25	TechH4 SD4-ICYL
	8 Piston	8.50	TechH4 SD4-PISTON
	9 External Cylinder	15.2	TechH4 SD4-ECYL
	10 Guided Sleeve	1.30	TechH4 SD4-BUSH
	11 "O"Ring of Stop Ring	0.01	TechH4 SD4-SR-SRING
	12 Stop Ring	0.30	TechH4 SD4-SRING
	13 Drive Chuck	3.40	TechH4 SD4-DCHUCK
	14 Drill Bit		TechH4 SD4-110FF-TV

Technical Data

Length(Less bit)	Weigth(Less bit)	External Diameter	Bit Shank	Hole Range	Connection Thread
922mm	38.0Kg	Φ100	DHD340A Cop44	Φ112-Φ127	API 2 3/8 " REG
Box Size	Impact rate at 1.7Mpa	Recommended rotation speed	Air Consumption		
			200-300(PSI)		
1010x130x160mm	25HZ	30-70r/min	500-700(CFM)		

Tech4 DHD340 DTH HAMMER

Tech4 DHD340. Hammers		Item Description	Weight (Kg)	Part Number
	1	Top Sub	6.50	Tech4 DHD340-TSUB
	2	"O"Ring of Top Sub	0.01	Tech4 DHD340-SR-TSUB
	3	Check Valve	0.42	Tech4 DHD340-CVALVE
	4	Spring	0.04	Tech4 DHD340-SPRING
	5	Compression Buffer	0.04	Tech4 DHD340-CBUFFER
	6	Air Distributor	2.20	Tech4 DHD340-DIST
	7	Internal Cylinder	2.30	Tech4 DHD340-ICYL
	8	Piston	9.00	Tech4 DHD340-PISTON
	9	External Cylinder	15.8	Tech4 DHD340-ECYL
	10	"O" Ring of Stop Ring	0.01	Tech4 DHD340-SR-SRING
	11	Stop Ring	0.20	Tech4 DHD340-SRING
	12	Drive Chuck	3.50	Tech4 DHD340-DCHUCK
	13	Drill Bit		Tech4 DHD340-115FF-TV

Technical Data

Length(Less bit)	Weigth(Less bit)	External Diameter	Bit Shank	Hole Range	Connection Thread
1030mm	40.0Kg	Φ99	Cop44 DHD340 HD45	Φ112-Φ127	API 3 1/2 " REG
Box Size	Impact rate at 1.7Mpa	Recommended rotation speed	Air Consumption		
			200-300(Psi)		
1150x130x160mm	27HZ	25-40r/min	500-700(CFM)		

Tech4 QL4 DTH HAMMER

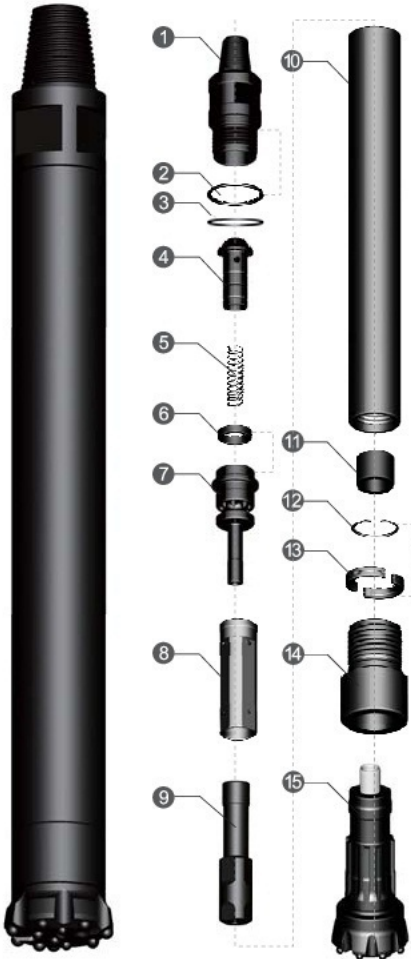
Tech4 QL4 . Hammers	Item Description	Weight (Kg)	Part Number	
	1	Top Sub	6.50	Tech4 QL4-TSUB
	2	"O"Ring of Top Sub	0.01	Tech4 QL4-SR-TSUB
	3	Check Valve	0.35	Tech4 QL4-CVALVE
	4	Spring	0.05	Tech4 QL4-SPRING
	5	Air Distributor	1.50	Tech4 QL4-CBUFFER
	6	Internal Cylinder	2.10	Tech4 QL4-DIST
	7	Piston	8.50	Tech4 QL4-ICYL
	8	External Cylinder	15.20	Tech4 QL4-PISTON
	9	Guided Sleeve	1.80	Tech4 QL4-ECYL
	10	"O" Ring of Stop Ring	0.005	Tech4 QL4-SR-SRING
	11	Stop Ring	0.20	Tech4 QL4-SRING
	12	Drive Chuck	3.20	Tech4 QL4-DCHUCK
	13	Drill Bit		Tech4 QL4-115FF-TV

Technical Data

Length(Less bit)	Weigth(Less bit)	External Diameter	Bit Shank	Hole Range	Connection Thread
1070mm	40.0Kg	Φ99	QL4	Φ112-Φ127	API 2 3/8 " REG
Box Size	Impact rate at 1.7Mpa	Recommended rotation speed	Air Consumption		
			200-300(Psi)		
1230x155x180mm	30HZ	25-40r/min	500-700(CFM)		

TechH5 QL50 DTH HAMER

TechH5QL50. Hammers	Item Description	Weight (Kg)	Part Number
---------------------	------------------	-------------	-------------



1	Top Sub TechH5	15.0	TechH5 QL50-TSUB
2	"O"Ring of Top Sub	0.015	TechH5 QL50-SR-TSUB
3	Breakout Ring of Top Sub	0.15	TechH5 QL50-BR-TSUB
4	Check Valve	1.00	TechH5 QL50-CVALVE
5	Spring	0.10	TechH5 QL50-SPRING
6	Compression Buffer	0.10	TechH5 QL50-CBUFFER
7	Air Distributor	3.50	TechH5 QL50-DIST
8	Internal Cylinder	4.20	TechH5 QL50-ICYL
9	Piston	19.0	TechH5QL50-PISTON
10	External Cylinder	24.6	TechH5 QL50-ECYL
11	Guided Sleeve	0.90	TechH5 QL50-BUSH
12	"O"Ring of Stop Ring	0.01	TechH5 QL50-SR-SRING
13	Stop Ring	0.40	TechH5 QL50-SRING
14	Drive Chuck	4.60	TechH5 QL50-DCHUCK
15	Drill Bit		TechH5 QL50-135FF-TV

Technical Data

Length(Less bit)	Weigth(Less bit)	External Diameter	Bit Shank	Hole Range	Connection Thread
1156mm	73.0Kg	Φ125	Cop54-G QL50	Φ140-Φ152	API 3 1/2 " REG
Box Size	Impact rate at 1.7Mpa	Recommended rotation speed	Air Consumption		
			250-350(PSI)		
1230x155x180mm	25HZ	20-35r/min	500-800(CFM)		

TechH5K QL50 DTH HAMMER

TechH5K QL50. Hammers	Item Description	Weight (Kg)	Part Number
	1 Top Sub	13.7	TechH5K QL50-TSUB
	2 "O"Ring of Top Sub	0.01	TechH5K QL50-SR-TSUB
	3 Check Valve	0.60	TechH5K QL50-CVALVE
	4 Spring	0.10	TechH5K QL50-SPRING
	5 Compression Buffer	0.20	TechH5K QL50-CBUFFER
	6 Air Distributor	2.00	TechH5K QL50-DIST
	7 Internal Cylinder	2.70	TechH5K QL50-ICYL
	8 Piston	13.0	TechH5K QL50-PISTON
	9 External Cylinder	22.5	TechH5K QL50-ECYL
	10 Guided Sleeve	3.00	TechH5K QL50-BUSH
	11 Retaining Ring	0.10	TechH5K QL50-RRING
	12 Stop Ring	0.65	TechH5K QL50-SRING
	13 Drive Chuck	4.50	TechH5K QL50-DCHUCK
	14 Drill Bit		TechH5K QL50-135FF-TV

Technical Data

Length(Less bit)	Weighth(Less bit)	External Diameter	Bit Shank	Hole Range	Connection Thread
935mm	65.0Kg	Φ126	QL50	Φ140-Φ152	API 3 1/2" REG
Box Size	Impact rate at 1.7Mpa	Recommended rotation speed	Air Consumption		
			250-350(Psi)		
1100x155x180mm	25HZ	30-70r/min	500-800(CFM)		

TechH5 DHD55 DTH HAMMER

TechH5 DHD55. Hammers	Item Description	Weight (Kg)	Part Number
-----------------------	------------------	-------------	-------------



1	Top Sub TechH5 D	15.0	TechH5 DHD55-TSUB
2	"O"Ring of Top Sub	0.01	TechH5 DHD55-SR-TSUB
3	Check Valve	1.00	TechH5 DHD55-CVALVE
4	Spring	0.04	TechH5 DHD55-SPRING
5	Ring	0.10	TechH5 DHD55-RING
6	Compression Buffer	0.06	TechH5 DHD55-CBUFFER
7	Compression Buffer Seat	0.40	TechH5 DHD55-SBS
8	Air Distributor	4.00	TechH5 DHD55-DIST
9	Internal Cylinder	4.70	TechH5 DHD55-ICYL
10	Piston	15.50	TechH5 DHD55-PISTON
11	External Cylinder	30.00	TechH5 DHD55-ECYL
12	"O" Ring of Stop Ring	0.01	TechH5 DHD55-SR-SRING
13	Stop Ring	0.30	TechH5 DHD55-SRING
14	Drive Chuck	6.40	TechH5 DHD55-DCHUCK
15	Drill Bit		TechH5 DHD55-140FF-TV

Technical Data

Length(Less bit)	Weighth(Less bit)	External Diameter	Bit Shank	Hole Range	Connection Thread
1214mm	77.5Kg	Φ125mm	Cop54 DHD350R HD55	Φ140-Φ152	API 2 3/8" REG API 3 1/2" REG
Box Size	Impact rate at 1.7Mpa	Recommended rotation speed	Air Consumption		
			250-350(PSI)		
1290x150x175mm	25HZ	20-35r/min	500-800(CFM)		

TechH6 QL60 DTH HAMMER

TechH6 QL60. Hammers	Item Description	Weight (Kg)	Part Number
----------------------	------------------	-------------	-------------

1	Top Sub	20.00	TechH6 QL60-TSUB
2	"O"Ring of Top Sub	0.02	TechH6 QL60-SR-TSUB
3	Check Valve	1.00	TechH6 QL60-CVALVE
4	Spring	0.10	TechH6 QL60-SPRING
5	Compression Buffer	0.10	TechH6 QL60-CBUFFER
6	Air Distributor	6.00	TechH6 QL60-DIST
7	Internal Cylinder	5.00	TechH6 QL60-ICYL
8	Piston	23.50	TechH6 QL60-PISTON
9	External Cylinder	31.00	TechH6 QL60-ECYL
10	Guided Sleeve	1.00	TechH6 QL60-BUSH
11	"O"Ring of Stop Ring	0.02	TechH6 QL60-SR-RING
12	Stop Ring	0.60	TechH6 QL60-SRING
13	Drive Chuck	5.40	TechH6 QL60-DCHUCK
14	Drill Bit		TechH6 QL60-165CC-TV

Technical Data

Length(Less bit)	Weigth(Less bit)	External Diameter	Bit Shank	Hole Range	Connection Thread
1212mm	95. 0Kg	Φ148mm	Cop64-G QL 60 HQL 60	Φ165-Φ178	API 3 1/2 " REG
Box Size	Impact rate at 1.7Mpa	Recommended rotation speed	Air Consumption		
			300-350(PSI)		
1270x170x200mm	23HZ	20-30r/min	600-900(CFM)		

TechH6H QL60 DTH HAMMER

TechH6H QL60 . Hammers	Item Description	Weight (Kg)	Part Number	
	1	Top Sub	20.00	TechH6H QL60-TSUB
	2	"O"Ring of Top Sub	0.015	TechH6H QL60-SR-TSUB
	3	Check Valve	0.70	TechH6H QL60-CVALVE
	4	Spring	0.10	TechH6H QL60-SPRING
	5	Air Distributor	3.50	TechH6H QL60-DIST
	6	Internal Cylinder	4.20	TechH6H QL60-ICYL
	7	Piston	23.00	TechH6H QL60-PISTON
	8	External Cylinder	30.00	TechH6H QL60-ECYL
	9	Guided Sleeve	4.00	TechH6H QL60-BUSH
	10	"O"Ring of Stop Ring	0.01	TechH6H QL60-SR-RING
	11	Stop Ring	0.60	TechH6H QL60-SRING
	12	Drive Chuck	5.50	TechH6H QL60-DCHUCK
	13	Drill Bit		TechH6H QL60-165CC-TV

Technical Data

Length(Less bit)	Weigth(Less bit)	External Diameter	Bit Shank	Hole Range	Connection Thread
1183mm	92.0Kg	Φ148mm	QL60 HQL60A	Φ165-Φ178	API 3 1/2" Reg
Box Size	Impact rate at 1.7Mpa	Recommended rotation speed	Air Consumption		
			300-350(PSI)		
1260x180x200mm	25HZ	20-30r/min	600-900(CFM)		

Tech8 QL80 DTM HAMMER

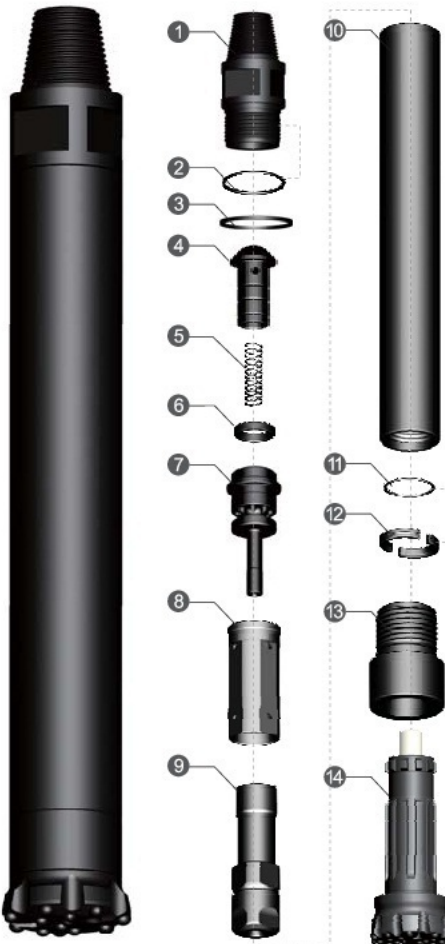
Tech8 QL80. Hammers	Item Description	Weight (Kg)	Part Number
	1 Top Sub	34.0	Tech8 QL80-TSUB
	2 "O"Ring of Top Sub	0.02	Tech8 QL80-SR-TSUB
	3 Check Valve	0.95	Tech8 QL80-CVALVE
	4 Spring	0.10	Tech8 QL80-SPRING
	5 Compression Buffer	0.35	Tech8 QL80-CBUFFER
	6 Air Distributor	6.05	Tech8 QL80-DIST
	7 Internal Cylinder	6.25	Tech8 QL80-ICYL
	8 Piston	38.0	Tech8 QL80-PISTON
	9 External Cylinder	56.0	Tech8 QL80-ECYL
	10 Guided Sleeve	5.30	Tech8 QL80-BUSH
	11 Retaining Ring	0.20	Tech8 QL80-RRING
	12 Stop Ring	1.90	Tech8 QL80-SRING
	13 Drive Chuck	13.0	Tech8 QL80-DCHUCK
	14 Drill Bit		Tech8 QL80-203CC-TV

Technical Data

Length(Less bit)	Weighth(Less bit)	External Diameter	Bit Shank	Hole Range	Connection Thread
1340mm	172.0Kg	Φ185	QL80	Φ203-Φ229	BECO 4 1/2" REG API 4 1/2" REG
Box Size	Impact rate at 1.7Mpa	Recommended rotation speed	AirConsumption		
			300-380(Psi)		
1440x230x270mm	25HZ	30-70r/min	950-1200(CFM)		

Tech8 DHD380 DTH HAMMER

Tech8 DHD380 .Hammers	Item Description	Weight (Kg)	Part Number
-----------------------	------------------	-------------	-------------



1	Top Sub	41.0	Tech8 DHD380-TSUB
2	"O"Ring of Top Sub	0.02	Tech8 DHD380-SR-TSUB
3	Breakout Ring of Top Sub	0.20	Tech8 DHD380-BR-TSUB
4	Check Valve	1.50	Tech8 DHD380-CVALVE
5	Spring	0.10	Tech8 DHD380-SPRING
6	Compression Buffer	0.42	Tech8 DHD380-CBUFFER
7	Air Distributor	0.13	Tech8 DHD380-DIST
8	Internal Cylinder	8.60	Tech8 DHD380-ICYL
9	Piston	41.0	Tech8 DHD380-PISTON
10	External Cylinder	75.2	Tech8 DHD380-ECYL
11	"O" Ring of Stop Ring	0.02	Tech8 DHD380-SR-SRING
12	Stop Ring	1.20	Tech8 DHD380-SRING
13	Drive Chuck	17.5	Tech8 DHD380-DCHUCK
14	Drill Bit		Tech8 DHD380-195CC-YV

Technical Data

Length(Less bit)	Weigth(Less bit)	External Diameter	Bit Shank	Hole Range	Connection Thread
1492mm	186.9Kg	Φ185mm	Cop84 DHD380 HD85	Φ203-Φ229	API 4 1/2" Reg
Box Size	Impact rate at 1.7Mpa	Recommended rotation speed	Air Consumption		
			300-380(PSI)		
1560x230x270mm	20HZ	20-30r/min	950-1200(CFM)		

TechH10 QL100 DTH HAMMER

TechH10 QL100. Hammers	Item Description	Weight (Kg)	Part Number	
	1	Top Sub	45.5	TechH10 QL100-TSUB
	2	"O"Ring of Top Sub	0.02	TechH10 QL100-SR-TSUB
	3	Breakout Ring	0.55	TechH10 QL100-BOR
	4	Check Valve	1.20	TechH10 QL100-CVALVE
	5	Spring	0.15	TechH10 QL100-SPRING
	6	Compression Buffer	0.45	TechH10 QL100-CBUFFER
	7	Air Distributor	10.2	TechH10 QL100-DIST
	8	Internal Cylinder	7.50	TechH10 QL100-ICYL
	9	Piston	50.0	TechH10 QL100- PISTON
	10	External Cylinder	79.5	TechH10 QL100-ECYL
	11	Guided Sleeve	6.20	TechH10 QL100-BUSH
	12	Retaining Ring	0.30	TechH10 QL100-RRING
	13	Stop Ring	2.20	TechH10 QL100-SRING
	14	Breakout Ring	0.55	TechH10 QL100-BOR
	15	Drive Chuck	23.0	TechH10 QL100-DCHUCK
	16	Drill Bit		TechH10 QL100-216CC-TV

Technical Data

Length(Less bit)	Weigth(Less bit)	External Diameter	Bit Shank	Hole Range	Connection Thread
1345mm	205.0Kg	Φ203mm	QL80	Φ216-Φ229	BECO 4 1/2 " REG API 4 1/2 " REG
Box Size	Impact rate at 2.4Mpa	Recommended rotation speed	Air Consumption		
			300-380(Psi)		
1500x240x280mm	25HZ	30-70r/min	950-1200(CFM)		

TecH12 QL120 DTH HAMMER

TecH12 QL120. Hammers	Item Description	Weight (Kg)	Part Number
	1 Top Sub	119.5	TecH12 QL120-TSUB
	2 O Ring (Top Sub)	0.02	TecH12 QL120-SK-TSUB
	3 Spacer	1.20	TecH12 QL120-SPACER-A
	4 Check Valve	0.20	TecH12 QL120-CVALVE
	5 Spring	0.50	TecH12 QL120-SPRING
	6 Compression Buffer	2.20	TecH12 QL120-CBUFFER
	7 Air Distributor	19.6	TecH12 QL120-DIST
	8 Internal Cylinder	15.1	TecH12 QL120-ICYL
	9 Piston	111.1	TecH12 QL120-PISTON
	10 External Cylinder	177.1	TecH12 QL120-ECYL
	11 Bearing Bush	19.15	TecH12 QL120-BUSH
	12 Retaining Ring	1.50	TecH12 QL120-RRING
	13 O Ring (Bit Ring)	0.20	TecH12 QL120-SK-SRING
	14 Bit Retaining Ring	4.35	TecH12 QL120-SRING
	15 Spacer	1.20	TecH12 QL120-SPACER-B
	16 Drive Chuck	37.2	TecH12 QL120-DSUB
	17 Drill Bit	108.0	TecH12 QL120-311CC

Technical Data

Length(Less bit)	Weigth(Less bit)	External Diameter	Bit Shank	Hole Range	Connection Thread
1590mm	510.2Kg	Φ275mm	HY12	Φ305-Φ350	API 6 5/8 " REG API 7 5/8 " REG
Box Size	Impact rate at 2.4Mpa	Recommended rotation speed	Air Consumption		
			200-350(PSI)		
1665x320x360mm	19.2HZ	15-35r/min	1200-1500(CFM)		

Selecting the right bit

TecHniSOL sarl BDM has a comprehensive range of DTH drill bits to match all conceivable applications. Each bit is made from quality alloy steel, and has been precision machined to produce a perfect body, heat treated to the required hardness, given surface compression for fatigue resistance, and fitted with precision buttons manufactured in-house. These are designed for specific applications for all rock types, hardness' s and conditions Bit life and rate of penetration are the most important criteria in selecting the right bit for a particular application.

Bit Face Shape Selection



Drop Center

For high penetration rates in soft to medium hard and fissured rock formations. Low to medium air pressures. Maximum hole deviation control.



Concave Face

The all-round application bit face specifically for medium hard and homogenous rock formations. Good hole deviation control and good flushing capacity.



Convex Face

For high penetration rates in soft to medium-hard with low to medium air pressures. It is the most resistance to steel wash, and may reduce the load and wear on the gauge buttons, but poor hole deviation control.



Double Gauge Face

This kind of face shape is suitable for fast penetration rates in medium to hard rock formations. Designed for high air pressures and good resistance to steel wash step gauge bit.



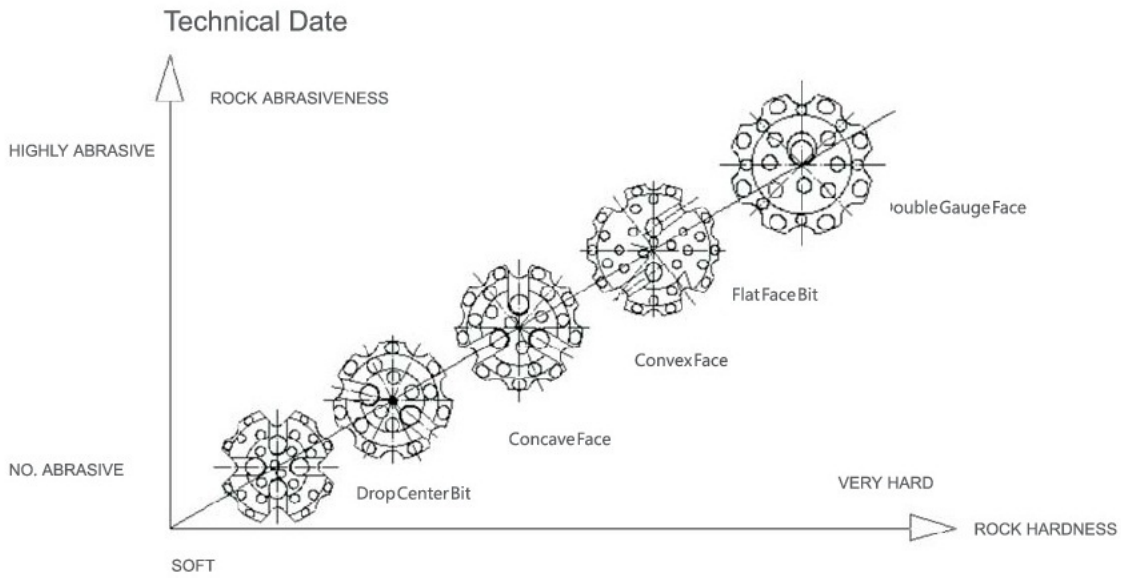
Flat Face

This kind of face shape is suitable for hard to very hard and abrasive rock formations in applications with high air pressures. Good penetration rates and resistance to steel wash.



Pineapple Face

The Pineapple Bit can be dressed with ballistic buttons for use in soft to medium hard formations where fractured rock can be expected, or can be supplied with spherical buttons for hard and abrasive formations.



Carbide Button Shape Selection



Round Button



Semi-Ballistic Buttons



Ballistic Button

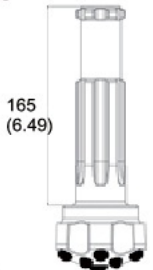
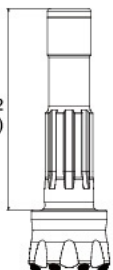
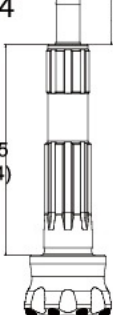

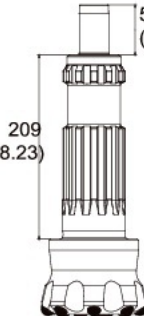
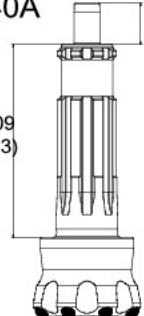
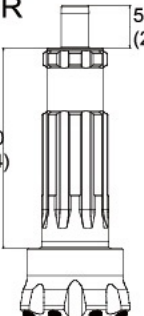
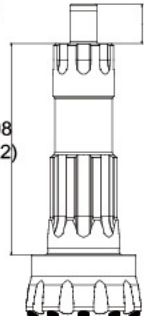
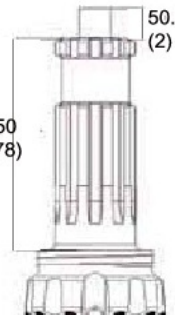
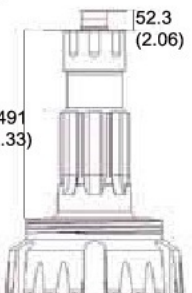
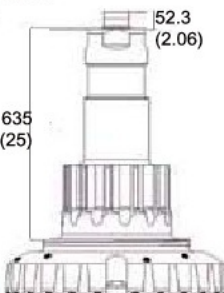
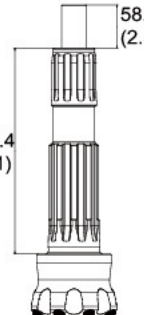
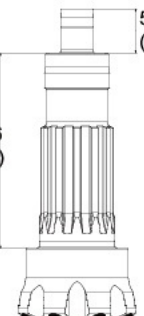
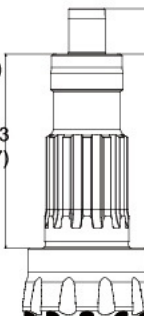


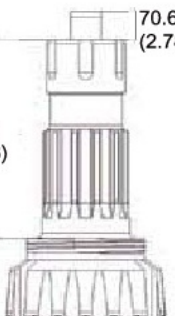
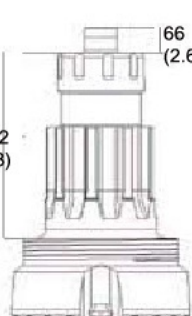
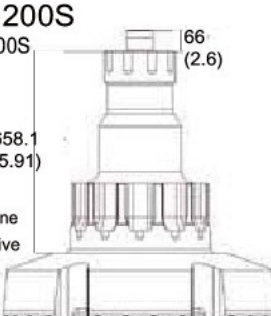


Flat Button



Sharp Button

Bit shanks

<p>BR 2 COP 20</p>  <p>165 (6.49)</p> <p>6 spline</p>	<p>COP 32 COP 32</p>  <p>215.2 (8.47)</p> <p>8 spline</p>	<p>COP 34 COP 34</p>  <p>57 (2.24)</p> <p>245 (9.64)</p> <p>8 spline</p>	<p>DHD 3.5 COP 35 TD 35.2 QLX 35 DHD 3.5 Terranox 3</p>  <p>58.9 (2.32)</p> <p>180.9 (7.12)</p> <p>8 spline</p>
<p>TD 40 COP 44 G QLX 40</p>  <p>57 (2.24)</p> <p>209 (8.23)</p> <p>12 spline</p>	<p>DHD 340A COP 44 DHD 4 QL 340 Terranox 4</p>  <p>45 (1.77)</p> <p>209 (8.23)</p> <p>8 spline</p>	<p>DHD 350R COP 54 DHD 5 Terranox 5</p>  <p>55 (2.17)</p> <p>260 (10.24)</p> <p>8 spline</p>	<p>DHD 360 COP 64 DHD 6 Terranox 6</p>  <p>57 (2.24)</p> <p>308 (12.12)</p> <p>8 spline</p>
<p>DHD 380 DHD 8 Terranox 8</p>  <p>50.8 (2)</p> <p>350 (13.78)</p> <p>10 spline</p>	<p>DHD 112 DHD 112</p>  <p>52.3 (2.06)</p> <p>491 (19.33)</p> <p>8 spline Pin drive</p>	<p>DHD 112S DHD 112S</p>  <p>52.3 (2.06)</p> <p>635 (25)</p> <p>12 spline Pin drive</p>	<p>QL 40 QL 40</p>  <p>58.4 (2.3)</p> <p>279.4 (11)</p> <p>10 spline</p>
<p>QL 50 QL 50 TD 50 COP 54 G</p>  <p>54.1 (2.13)</p> <p>239.6 (21.68)</p> <p>12 spline</p>	<p>QL 60 QL 60 TD 60/65/70 COP 64 G</p>  <p>59 (2.32)</p> <p>253.3 (9.97)</p> <p>12 spline</p>	<p>QL 80 QL 80 TD 80 TD 85</p>  <p>52.3 (2.05)</p> <p>332 (13.07)</p> <p>16 spline</p>	<p>TD 90 TD 90</p>  <p>52.3 (2.06)</p> <p>332 (13.07)</p> <p>16 spline</p>
<p>QL 120 QL 120</p>  <p>70.6 (2.78)</p> <p>491 (19.33)</p> <p>12 spline Pin drive</p>	<p>QL 200 QL 200</p>  <p>66 (2.6)</p> <p>492.2 (19.38)</p> <p>9 spline Pin drive</p>	<p>QL 200S QL 200S</p>  <p>66 (2.6)</p> <p>658.1 (25.91)</p> <p>12 spline Pin drive</p>	

3" BIT Data Referenced By IR3.5 Flat Face Bit



★ Specification Of Products : IR3.5



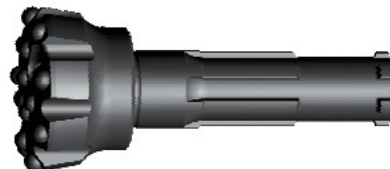
Specification Of Products : M30



Specification Of Products : COP32



Specification Of Products : QL30, COP34



Specification Of Products : BR3

Diameter		No x Button diameter , mm		Button angle°	Flushing holes	Weight (Kg)	Part No
mm	inch	Gauge Buttons	Front Buttons				
90	3 9/16	8x12	7x11	38	2	4.6	HD35-90
92	3 5/8	8x12	7x11	38	2	4.6	HD35-92
95	3 3/4	8x12	7x11	38	2	4.7	HD35-95
100	3 15/16	8x12	7x12	38	2	4.8	HD35-100
105	4 1/8	8x14	7x12	38	2	5.0	HD35-105
110	4 5/16	8x14	7x12	38	2	5.5	HD35-110

4" BIT Data Referenced By DHD340A Flat Face Bit



★ Specification Of Products : DHD340A
COP44



Specification Of Products : M40



Specification Of Products : SD4



Specification Of Products : QL40

Diameter		No x Button diameter , mm		Button angle°	Flushing holes	Weight (Kg)	Part No
mm	inch	Gauge Buttons	Front Buttons				
105	4 1/8	8x14	7x12	38	2	7.6	HD45-105
110	4 5/16	8x14	7x12	38	2	7.8	HD45-110
115	4 1/2	8x14	7x13	38	2	8.2	HD45-115
120	4 3/4	8x14	8x13	38	2	8.7	HD45-120
125	4 15/16	8x14	10x13	38	2	8.9	HD45-125
130	5 1/8	8x16	8x14	38	2	9.4	HD45-130

5" BIT Data Referenced By DHD350R Flat Face Bit



★ Specification Of Products : DHD350R
COP54



Specification Of Products : M50



Specification Of Products : SD5



Specification Of Products : QL50

Diameter		No x Button diameter , mm		Button angle°	Flushing holes	Weight (Kg)	Part No
mm	inch	Gauge Buttons	Front Buttons				
130	5 1/8	8x16	8x14	38	2	15	HD55-130
135	5 1/4	8x16	8x14	38	2	15.2	HD55-135
138	5 1/2	8x16	10x14	38	2	15.6	HD55-138
140	5 1/2	8x16	10x14	38	2	15.8	HD55-140
146	5 3/4	8x18	8x15	38	2	16.1	HD55-146
150	5 7/8	8x18	8x15	38	2	16.5	HD55-150
152	6	8x18	8x15	38	2	17	HD55-152
156	6 1/8	8x18	8x16	38	2	17.5	HD55-156

6" BIT Data Referenced By DHD360R Concave Face Bit



★ Specification Of Products : DHD360
COP64



Specification Of Products : M60



Specification Of Products : SD6



Specification Of Products : QL60

Diameter		No x Button diameter , mm		Button angle°	Flushing holes	Weight (Kg)	Part No
mm	inch	Gauge Buttons	Front Buttons				
152	6	8x18	4x16+4x14	38	2	23	HD65-152
154	6	8x18	4x16+4x14	38	2	23	HD65-154
156	6 1/4	8x18	4x16+4x14	38	2	23	HD65-156
159	6 1/4	8x18	4x16+4x14	38	2	23.5	HD65-159
165	6 1/2	8x18	8x16	38	2	24	HD65-165
171	6 3/4	8x18	8x16	38	2	25	HD65-171
178	7	8x18	10x16	38	2	26	HD65-178
185	7 1/4	8x18	10x16	38	2	26.8	HD65-185
190	7 1/2	10x18	13x16	38	2	27.5	HD65-190
203	8	10x18	8x18+6x16	38	2	31	HD65-203

8" BIT Data Referenced By DHD380 Concave Face Bit



★ Specification Of Products : DHD380
COP84



Specification Of Products : M80



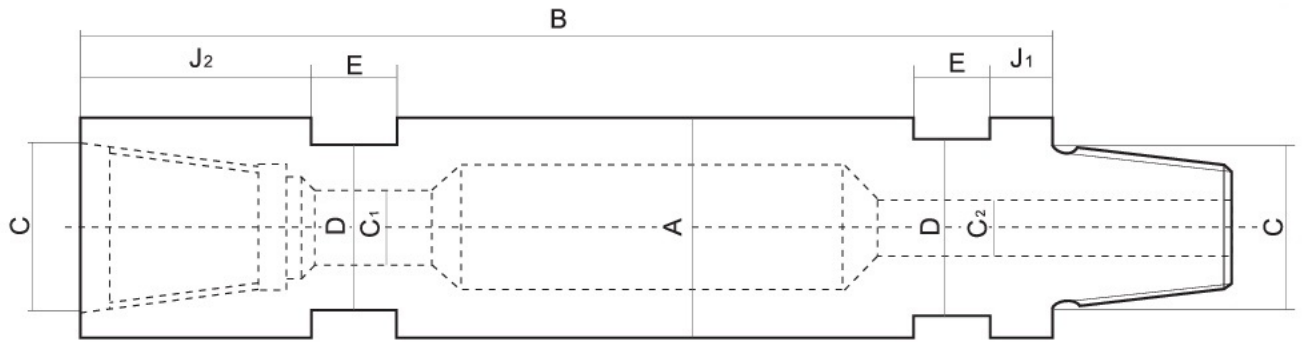
Specification Of Products : SD8



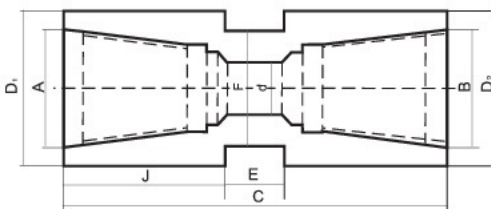
Specification Of Products : QL80

Diameter		No x Button diameter , mm		Button angle°	Flushing holes	Weight (Kg)	Part No
mm	inch	Gauge Buttons	Front Buttons				
200	7 7/8	10x18	8x18+6x16	38	2	46	HD85-200
203	8	10x18	8x18+6x16	38	2	47	HD85-203
216	8 1/2	10x18	8x18+6x16	38	2	53	HD85-216
219	8 5/8	10x18	8x18+6x16	38	2	54	HD85-219
222	8 3/4	10x18	8x18+6x16	38	2	55	HD85-222
225	8 7/8	10x18	8x18+7x16	38	2	56	HD85-225
229	9	10x18	8x18+7x16	38	2	57	HD85-229
235	9 1/4	12x18	30x16	38	2	57.5	HD85-235
240	9 1/2	12x18	30x16	38	2	58	HD85-240
254	10	12x18	12x18+8x16	38	2	61	HD85-254
270	10 5/8	12x19	20x18+8x16	38	2	66	HD85-270
279	11	12x19	20x18+9x16	38	3	71	HD85-279

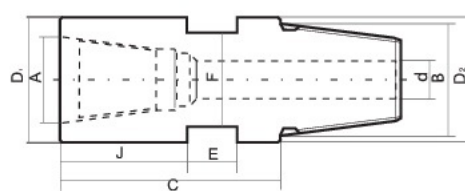
Drill Pipe



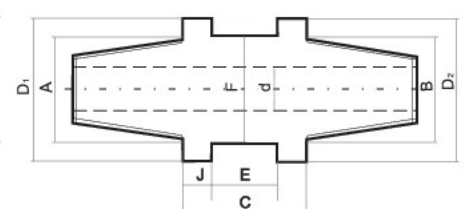
A OD(mm)	B Length SS	C1 Joints type	C2 Threat type	D Across flat	E Width spanner flat	F Thickness
76	1500	box-pin	RD 50	65	38.1	5
89	1800	box-box	API 2 3/8" Reg	69.8	60.3	6
102	3000	pin-pin	API 3 1/2" Reg	63.5	50.8	7.5
114	4000		API 4 1/2" Reg	92.2	69.8	8
127	5000		3 1/8" DIBH	120.6	...	10
140	6000		CUBEX#21	130.1		12
152	7500		CUBEX#24	...		14
...	9144		CUBEX#28			...
...



Box-Box Adapters



Pin-Box Adapters

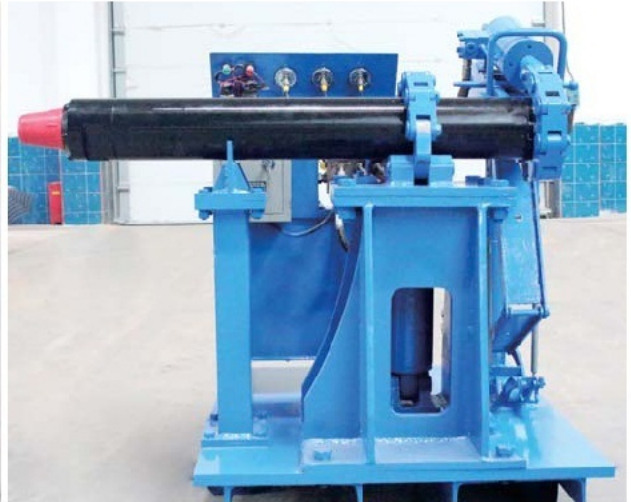


Pin-Pin Adapters

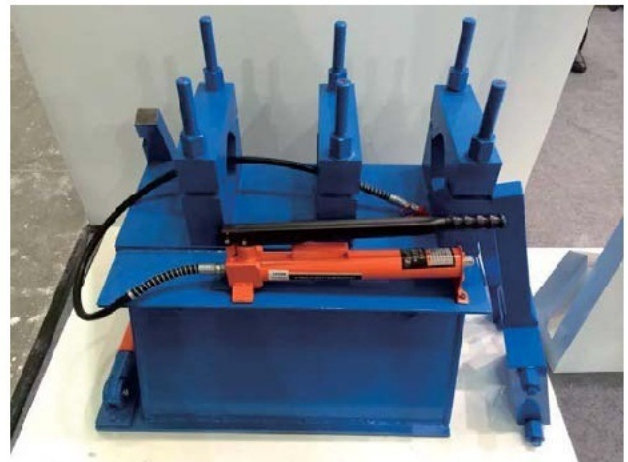
A-B Joints type	A1-B1 Threat type	C Length SS	D1 OD	D2 OD	E Width spanner flat	F Across flat
box-pin	RD 50	1500	76	76	38.1	65
box-box	API 2 3/8" Reg	1800	89	89	60.3	69.8
pin-pin	API 3 1/2" Reg	3000	102	102	50.8	63.5
	API 4 1/2" Reg	4000	114	114	69.8	92.2
	3 1/8" DIBH	5000	127	127	...	120.6
	CUBEX#21	6000	140	140		130.1
	CUBEX#24	7500	152	152		...
	CUBEX#28	9144
	BECO

TecHniSol Sarl Breakout Bench

The threaded connections of the driver chuck and top sub may become very tightly tensioned during drilling. It is convenient to break the hammer threads on the rig, but if the threads cannot be loosened or tend to get stuck, a breakout bench is the solution. This handy but powerful breakout bench can easily be placed in a workshop or container and it breaks DTH hammers between 3" and 10" Select right breakout bench depending on voltage and power source.



Available for hammer size 6"~12"



Technical Data: rpm of chain less than 10tums/m velocity of piston rod 1.8meter/m

Hammer Range	Overall dimensions (length*width*depth)	Weight	Maximum assembly torque
3.5"-10"	1600*930*1050mm	800Kg	67 KN*m(50ftlb)
Maximum disassembly torque	Operating Height	Hydraulic Range	Power
81 KN*m(60ftlb)	800mm	0-20Mpa	3Kw,220V,50Hz